

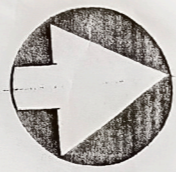
Tommy Sumnerville 9,500 18 000

STATE OF GEORGIA, COUNTY OF GLYNN. IT IS HEREBY CERTIFIED THAT I, D. C. MCCASKILL, ENGINEER FOR GLYNN COUNTY, GEORGIA, HAVE EXAMINED THIS MAP AND, HAVING FOUND THE SAME TO COMPLY WITH THE REQUIREMENTS OF THE ORDINANCE TO REGULATE THE MAKING OF SURVEYS AND THE FILING FOR RECORD OF PLATS AND SURVEYS WITHIN THE COUNTY OF GLYNN SAID PLAT IS HEREBY APPROVED THIS THE \_\_\_\_\_ DAY OF \_\_\_\_\_, 1972.

THE UNDERSIGNED REGISTERED PROFESSIONAL ENGINEER HEREBY CERTIFIES THAT THIS LOCATION PLAT FULLY AND ACCURATELY DEPICTS THE LAYOUT, LOCATIONS, NUMBERS, LETTER IDENTIFICATIONS, AND DIMENSIONS OF THE NO. 1 FAIRWAY CONDOMINIUMS.

*Christopher Gibbons* (Seal)  
 CHRISTOPHER GIBBONS  
 PROFESSIONAL ENGINEER  
 No. 10783  
 Expires 12/31/77  
 GEORGIA REGISTERED PROFESSIONAL ENGINEER  
 CHRISTOPHER GIBBONS

D. C. MCCASKILL, ENGINEER



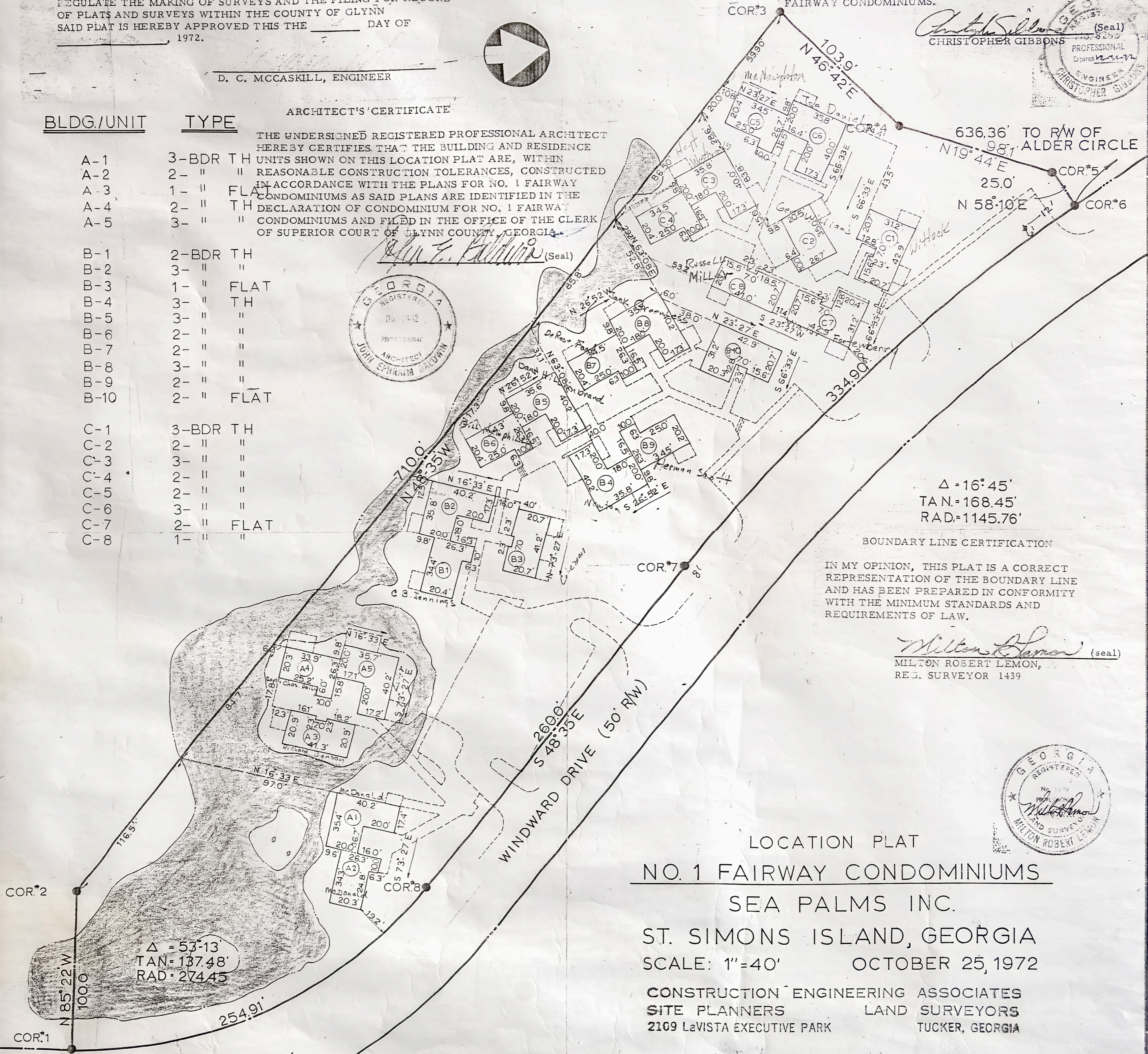
ARCHITECT'S CERTIFICATE

THE UNDERSIGNED REGISTERED PROFESSIONAL ARCHITECT HEREBY CERTIFIES THAT THE BUILDING AND RESIDENCE UNITS SHOWN ON THIS LOCATION PLAT ARE, WITHIN REASONABLE CONSTRUCTION TOLERANCES, CONSTRUCTED IN ACCORDANCE WITH THE PLANS FOR NO. 1 FAIRWAY CONDOMINIUMS AS SAID PLANS ARE IDENTIFIED IN THE DECLARATION OF CONDOMINIUM FOR NO. 1 FAIRWAY CONDOMINIUMS AND FILED IN THE OFFICE OF THE CLERK OF SUPERIOR COURT OF GLYNN COUNTY, GEORGIA.

*John E. Baldwin* (Seal)  
 REGISTERED PROFESSIONAL ARCHITECT  
 No. 1442  
 JOHN EPHRAIM BALDWIN

BLDG./UNIT TYPE

A-1	3-BDR TH
A-2	2- " "
A-3	1- " FLAT
A-4	2- " TH
A-5	3- " "
B-1	2-BDR TH
B-2	3- " "
B-3	1- " FLAT
B-4	3- " TH
B-5	3- " "
B-6	2- " "
B-7	2- " "
B-8	3- " "
B-9	2- " "
B-10	2- " FLAT
C-1	3-BDR TH
C-2	2- " "
C-3	3- " "
C-4	2- " "
C-5	2- " "
C-6	3- " "
C-7	2- " FLAT
C-8	1- " "



636.36' TO R/W OF ALDER CIRCLE  
 N19°44'E  
 25.0'  
 N 58°10'E  
 COR\*5  
 COR\*6

$\Delta = 16^{\circ}45'$   
 TAN = 168.45'  
 RAD = 1145.76'

BOUNDARY LINE CERTIFICATION

IN MY OPINION, THIS PLAT IS A CORRECT REPRESENTATION OF THE BOUNDARY LINE AND HAS BEEN PREPARED IN CONFORMITY WITH THE MINIMUM STANDARDS AND REQUIREMENTS OF LAW.

*Milton Robert Lemon* (seal)  
 MILTON ROBERT LEMON,  
 REG. SURVEYOR 1439

REGISTERED PROFESSIONAL LAND SURVEYOR  
 No. 1439  
 Milton Robert Lemon  
 MILTON ROBERT LEMON

LOCATION PLAT  
 NO. 1 FAIRWAY CONDOMINIUMS  
 SEA PALMS INC.  
 ST. SIMONS ISLAND, GEORGIA  
 SCALE: 1"=40'      OCTOBER 25, 1972

CONSTRUCTION ENGINEERING ASSOCIATES  
 SITE PLANNERS      LAND SURVEYORS  
 2109 LaVISTA EXECUTIVE PARK      TUCKER, GEORGIA

DECLARATION OF CONDOMINIUM RECORDED IN DEED BOOK \_\_\_\_\_ PAGE \_\_\_\_\_ RECORDS OF GLYNN COUNTY, GEORGIA.

RECORDED IN GLYNN COUNTY, GEORGIA CONDOMINIUM PLAT BOOK \_\_\_\_\_ PAGE \_\_\_\_\_